

e-Room® Classic

HVAC ROOM CONTROLLER FOR LONWORKS NETWORKS®

Product Reference No.: RC.624501-000

Instruction Sheet

- **Features** LCD display/inputs/outputs/temperature sensor
- **Configurable** to suit final application
- **Stand-alone operation**
- **Remote control communication port**
- **Energy saving and management functions**



Product description

e-Room Classic is a flush mount controller for hotel, home, office and hospital applications.

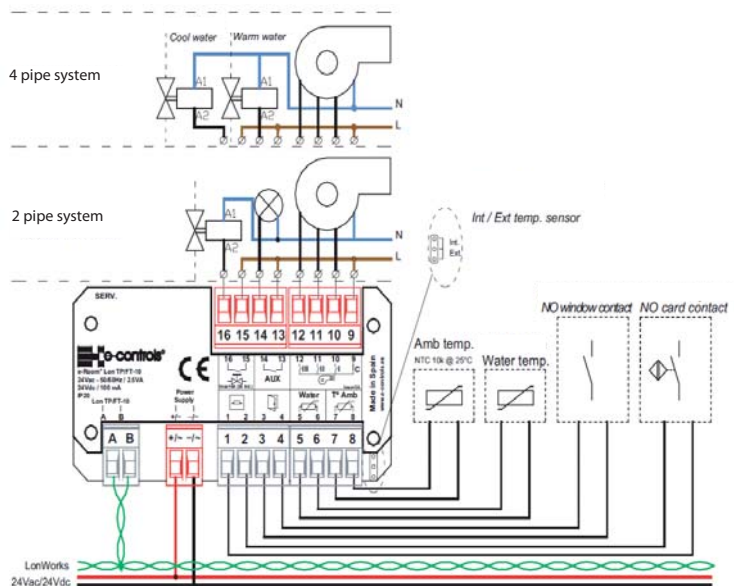
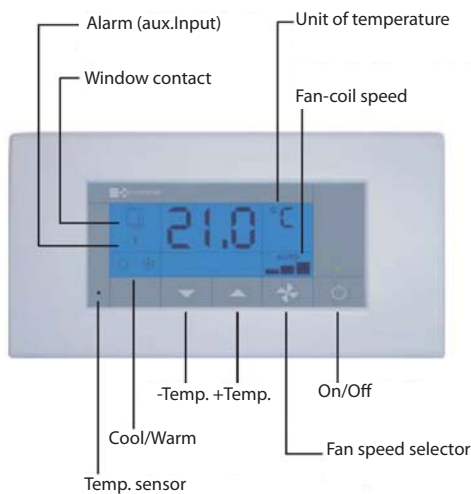
Easy installation and user-friendly configuration to suit any type of location.

General Features

- Wide, blue backlit LCD, 64 × 26 (mm)
- Integral front pushbuttons: +T/-T/Fan Speed/On-Off
- Temperature indication (°C/°F)
- 2 pipe/4 pipe systems
- Switches off or to Standby when card is removed
- Card contact input: card reader/auxiliary

- Fan Coil: 3 speeds/1 speed
- Warm/Cool modes: speed 1 may be interlocked or not when no demand is present
- Warm/Cool setpoint temperature in standby mode
- Warm/Cool dead band
- Delayed switching to Standby when key card is removed

General Functions & Wiring Diagram



Installation instructions

For fast and accurate ambient temperature measurement, the controller should be installed such that air may circulate vertically. Installation height should be approximately 1.5 m from the floor. This device should not be installed on shelves, behind curtains, above or near heat sources, or exposed to direct sunlight.

Caution:

Prior to installing or removing the device, ensure that there is no mains voltage present in the wiring to be connected or near the unit.

Do not cut or roll up the wires to be connected to the device.

Do not work on the wiring with wet hands.

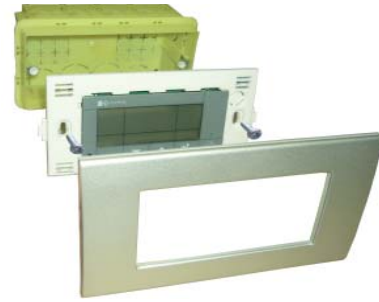
Do not open or drill through the device.

Keep the device and the supply wires away from moisture and dust.

Use a damp cloth to clean the device.

Installation Steps:

- 1- Install the BTicino 504E standard flush mount back box.
- 2- Insert and screw in the e-Room Classic.
- 3- Fit the frame onto the device.



Operating Modes

Inputs:

- 1 Card reader contact (or lighting auxiliary input)
- 1 Window contact
- 1 Water temperature sensor
- 1 External ambient temperature sensor

Outputs:

- 3 Fan Coil speed (I, II, III)
- 1 Cool water valve actuator
- 1 Auxiliary (warm water valve actuator in 4 pipe applications)

Temperature sensor:

Built in on the front panel (external sensor input)

Technical Features

Supply Power

Operating voltage. 24 Vac ±20%; 50/60 Hz
24 Vdc ±20%

Maximum rated current 110 mA

Communications

Technology LonWorks®

Standard ISO/IEC 14908

Protocol LonTalk®

Transmission channel. TP/FT-10; 78 kbps

LonMark® compatible device

Contact type inputs (card, window)

Open circuit voltage 12 Vdc ±0.2 V

Short circuit current. 8 mA

Maximum open contact current. < 2 mA

Minimum closed contact current > 5.5 mA

Temperature sensor inputs (water, external)

Sensor type Resistive

Sensor characteristics Interchangeable NTC, 1%

10 kΩ at 25 °C (77 °F)

Ambient temperature measuring range. +5 °C to +45 °C

(+41 °F to +113 °F)

Water temperature measuring range. +10 °C to +50 °C

(+50 °F to +122 °F)

Resolution. 0.1 °C

Relay type outputs

Contact type Potential free

Normally open

Maximum operating voltage 250 Vca

Maximum current 5 A, resistive load (*1)

3 A, inductive load

(*1) Auxiliary output 3 A

Device status

On/Standby. Off/Green

LonWorks status (SERV.) Please refer to LonWorks reference manuals

Pushbuttons

+T/-T/Speed/ON-OFF/Service Pin (SERV) - back side

Temperature

Operating 0 °C to +50 °C (+32 °F to +104 °F)

Storage. -20 °C to +85 °C (-4 °F to +185 °F)

Humidity (non condensing)

Operating 10% to 90% RH at 50 °C

Storage. 95% RH at 50 °C

Dimensions, weight and installation

Dimensions 136 × 70 × 50 (mm)

Weight 235 g

Flush mount back box BTicino 504 E (not included)

Frame. BTicino, Light series (not included)

Plug-in connectors YES

Conductor cross sectional area. 0.5 mm² to 2.5 mm²

Protection index. IP20

Electrical safety Class III

Applicable product standard

Automatic electrical controls for household

and similar use EN 60730-1

CE Conformity

Low Voltage Directive 2006/95/EC

Electromagnetic Compatibility Directive 2004/108/EC

Regulations

Safety. EN 60730-1

Emissions EN 61000-6-3

Immunity EN 61000-6-1

Product reference No.

e-Room Classic. RC.624501-000

Product reference

External temperature sensor, pure white. AC.000101-000

External temperature sensor, brushed aluminium. AC.000101-001

NO/NC presence detector, pure white. DP.100100-000

NO/NC presence detector, brushed aluminium. DP.100100-001

230 Vac/24 Vac Transformer. AC.300000-000

110 Vac/24 Vac Transformer. AC.400000-000

Ref. AC.000101-000 and AC.000101-001 provide the required supplementary isolation as defined in standard UNE-EN 60730-1. If a different accessory is used, an equivalent isolation level should be ensured.