

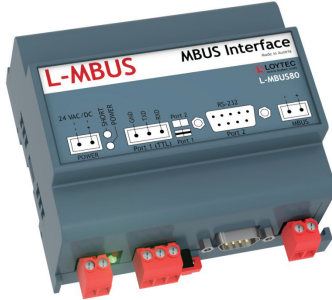
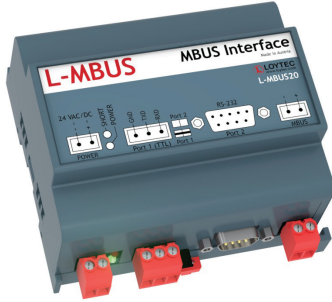
# M-Bus Level Converter

## L-MBUS20, L-MBUS80

Datasheet #89027520

BACnet  
 CEA-709  
 KNX

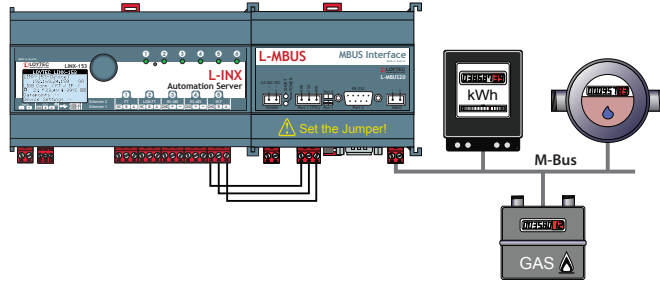
Modbus  
 ✓ M-Bus  
 OPC



The L-MBUS level converters are used to connect an M-Bus network to a LOYTEC device. Up to 20 or 80 M-Bus devices can be connected via L-MBUS20 or L-MBUS80.

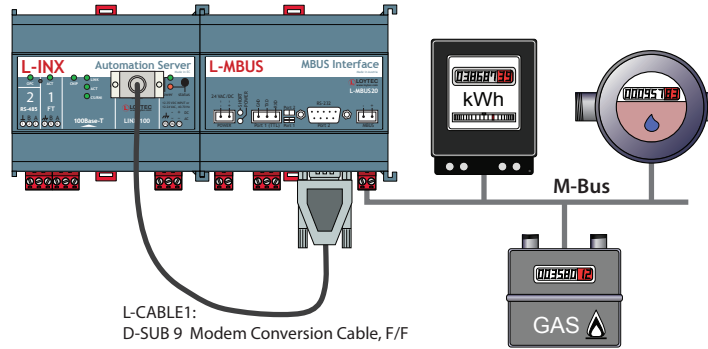
### TTL Connection

The TTL port is used to connect the L-MBUS to the EXT port of L-INX Automation Servers, L-ROC Room Controllers, and also to the L-GATE Gateways. The interface is galvanically isolated.



### RS-232 Connection

The RS-232 port is used for connecting the M-Bus Level Converter to the CEA-709 Automation Servers LINX-100, LINX-101, LINX-110, and LINX-111 or BACnet Automation Servers LINX-200, LINX-201, LINX-210, and LINX-211. The wiring is done with an L-CABLE1. The interface is galvanically isolated.



### General Specifications

|                      |  |
|----------------------|--|
| Dimensions (mm)      | 107 x 100 x 60 (L x W x H), DIM024   |
| Installation         | DIN rail mounting following DIN 43880, top hat rail EN 50022                             |
| Power supply         | 24 VDC / 24 V AC ±10 %   |
| Operating conditions | 0 °C to 50 °C, 10 – 90 % RH, noncondensing, degree of protection: IP40, IP20 (terminals) |

### Specifications

| Type              | L-MBUS20  | L-MBUS80  |
|-------------------|---|---|
| Power consumption | 9.6 W   | 14.4 W  |
| Baud rate         | 300 to 9600 baud  | 300 to 9600 baud  |
| Interfaces        | 1 x TTL or 1 x RS-232 (EIA-232), galvanically isolated<br>1 x M-Bus                             | 1 x TTL or 1 x RS-232 (EIA-232), galvanically isolated<br>1 x M-Bus |
| For use with      | L-INX Automation Servers, L-ROC Room Controllers, L-GATE Gateways, LIOB-586/588/589 Controllers |   |

### Resource limits

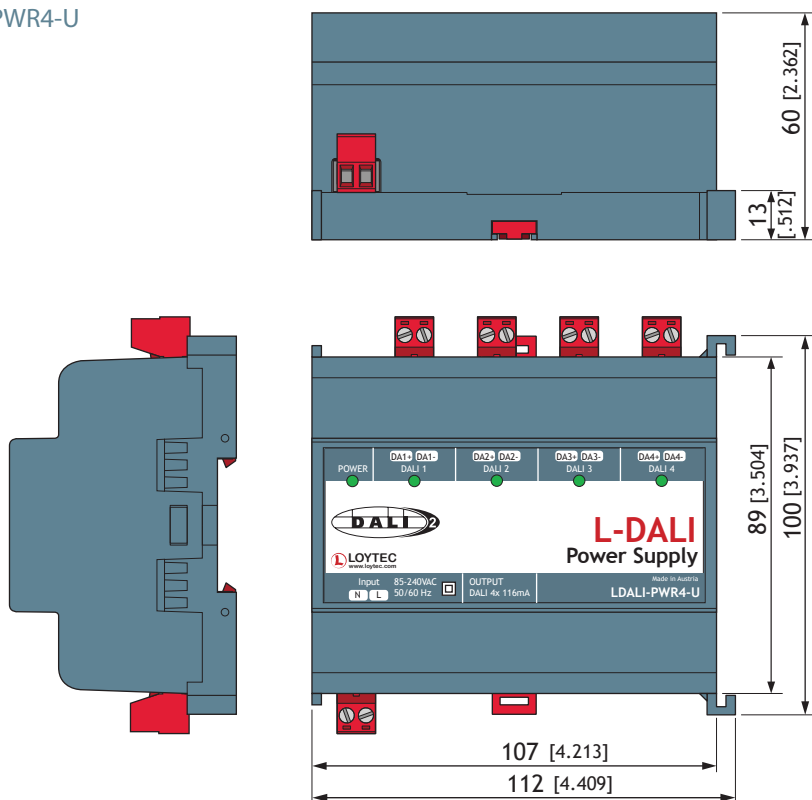
|               |          |          |
|---------------|----------|----------|
| M-Bus devices | Up to 20 | Up to 80 |
|---------------|----------|----------|

### Order number Product description

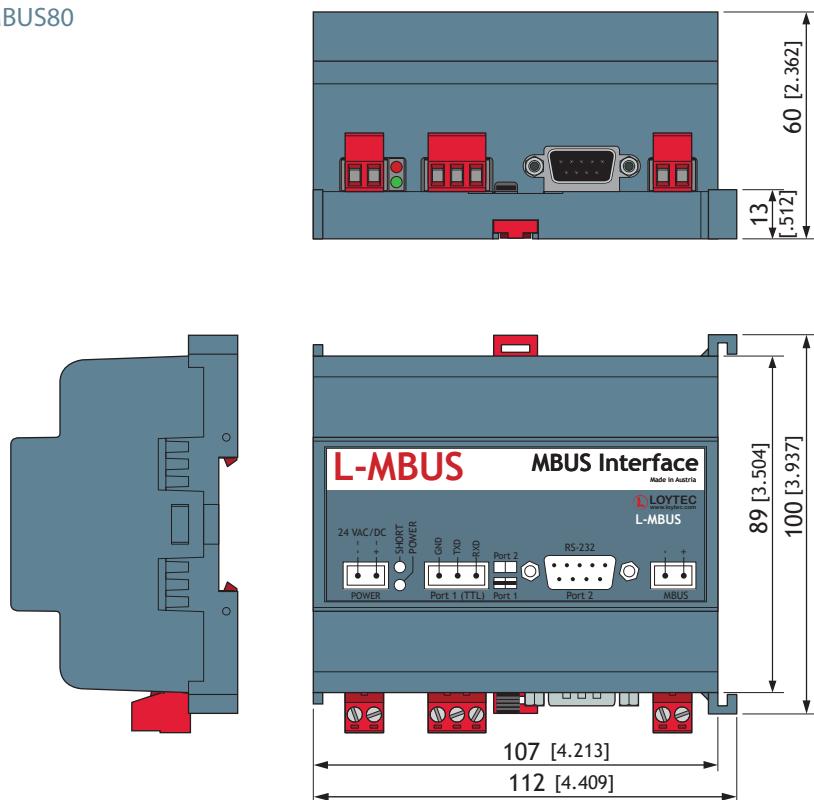
|          |  |
|----------|--|
| L-MBUS20 | M-Bus level converter for 20 M-Bus devices   |
| L-MBUS80 | M-Bus level converter for 80 M-Bus devices   |
| L-CABLE1 | Connection cable between LINX-x00/x01/x10/x11 Automation Server and L-MBUSx0 M-Bus level converter |

## Dimensions of the devices in mm and [inch]

**DIM023** LDALI-PWR2-U  
LDALI-PWR4-U



**DIM024** L-MBUS20  
L-MBUS80



SCALE 1:2  
10 0 20 40 60 80 100 mm